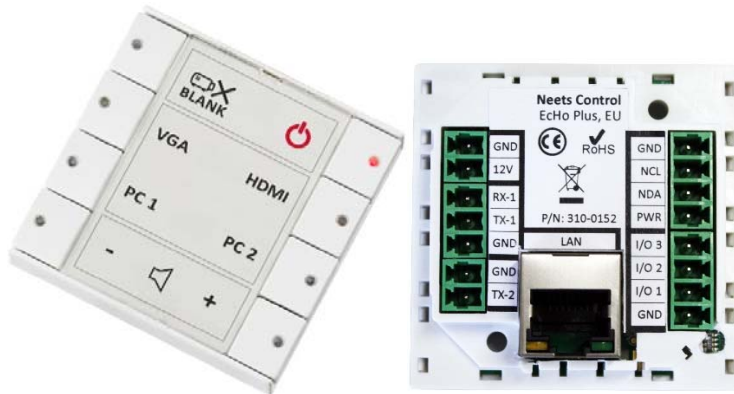


Neets Control – EcHo Plus

8-Button Keypad with Remote Monitoring



Neets Control – EcHo Plus provides uniform AV control interface in all rooms through an 8-Button Keypad with built-in controller.

For installations with multiple rooms, the included Central Control software makes it possible to monitor rooms with EcHo Plus installed from a central computer.

Features

8-Button AV control system with Remote Monitoring

The world's most compact AV control system – no external processors required

8 Freely configurable keypad buttons

Provides uniform AV control interface in all rooms and all 8 buttons can be configured for any function

1 Bi-directional RS-232 port

Used for controlling projectors, displays, amplifiers & other AV devices with feedback functionality

1 Uni-directional RS-232 or 1 IR port

Used for sending commands to projectors or other AV devices using serial or infrared communication

1 Ethernet port

Used for controlling two LAN devices and connection to Central Control and Project Designer

3 General Purpose I/O ports

Used for input/output control of relays, switches and sensors

1 NEB port (Neets Expansion Bus)

Add 2 additional devices - choose between Keypad, Level Control or Port Expansion (serial and I/O).

1 front USB port

Used for easy system configuration, uploading and downloading project files, service and maintenance

iOS/Android support

Controlled through iOS/Android touch devices – fixed user interface

Email notifications and warnings

Email notification on lamp/filter hours and warnings

Included: Configuration through our free and no-license software: Neets Project Designer

Neets Control – EcHo Plus

8-Button Keypad with Remote Monitoring

Neets Central Control features:

Remote monitoring

Monitor rooms with EcHo Plus (or Neets Control OsCar/ SieRRa II) installed from one central location.

Lamp & Filter hours feedback

Get status on lamp and filter hours for your projectors for preventive maintenance

Grouping rooms, floors or levels

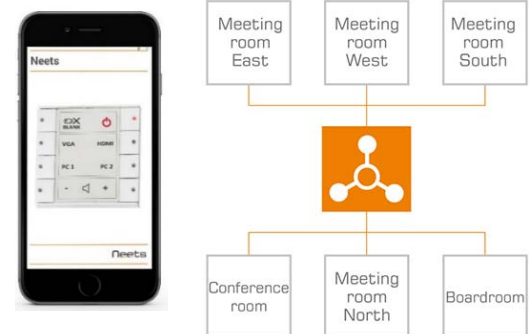
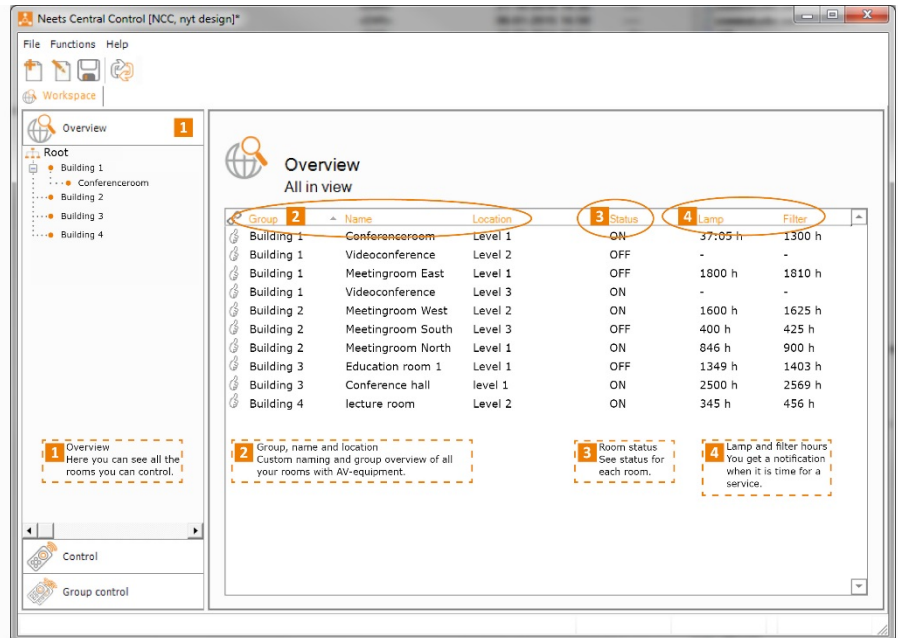
Control groups or individual rooms over network – e.g. one “POWER OFF” command for all rooms

Remote AV support

From AV/IT support you can immediately get an overview of a room and test the control commands

Software included free-of-charge

Neets Central Control software is a free-of-charge and no-license software



Technical Specifications

Communication ports:
1 RS-232 (TX and RX)
Baud: 1200 – 115200

Data Bit: 7/8
Parity: None, Even, Odd
Stop Bit: 1/1.5/2

1 RS-232 or IR (TX only)
Baud: 1200 – 115200
Parity: None, even, odd
Stop Bit: 1/1.5/2

IR:
Transmit
381 Hz – 500 kHz
Devices: 2

1 Ethernet port
Speed: 10/100 Mbit
auto-detect
Devices: 2

3 I/Os (GPIO)
Input:
Sense Low: <1 VDC
Sense High: >4 VDC

Output:
Type: Open drain
Max Voltage: 24 VDC
Max Current: 0.5 A

Neets Expansion Bus (NEB)
12 V (0.3 A) output
2 devices

Included in box
12 V PSU (110- 230V AC)

Dimensions
(without frame)(EU):
Width: 55 mm
Height: 55 mm
Depth: 17 mm

Dimensions
(without frame)(DK):
Width: 72 mm
Height: 45 mm
Depth: 17 mm

Weight:
90 g

Conformity:
Approval: CE
EN 55022
EN 55024

Product item numbers:
310-0252:
Neets Control – EcHo Plus,
DK - Polar white

310-0152:
Neets Control – EcHo Plus,
EU - Polar white