

Specifications

	VPL-SW620	VPL-SW620C	VPL-SW630	VPL-SW630C	VPL-SX630
Light output / color light output	2,600 lumens (High mode)	2,600 lumens (High mode)	3,100 lumens (High mode)	3,100 lumens (High mode)	3,200 lumens (High mode)
Panel display resolution	WXGA (1280 x 800 dots)				XGA (1024 x 768 dots)
Contrast ratio (full white / full black) *1	3,000: 1				
Light source	UHP Lamp 225 W type				
Recommended lamp replacement time *2	3,000 H (Hi) / 5,000 H (Std) / 8,000 H (Low)				
Filter cleaning cycle *2	Max 8,000 H Same time as the lamp replacement is recommended				
Projection lens - Zoom	Optional: Manual (Approx. x1.03)				
Projection lens - Focus	Manual				
Projection lens - Lens shift	Manual, Vertical: +/- 3.7% Horizontal: +/- 2.3%				Manual, Vertical: +/- 3.1% Horizontal: +/- 2.3%
Projection lens - Throw ratio	0.27:1 (0.267-0.274:1)				
Keystone correction	Max. Vertical: +/- 5 degrees				
Fan noise	High 35dB / Standard 32dB / Low 28dB				
OSD language	24-languages (English, Dutch, French, Italian, German, Spanish, Portuguese, Turkish, Polish, Russian, Swedish, Norwegian, Japanese, Simplified Chinese, Traditional Chinese, Korean, Thai, Vietnamese, Arabic, Farsi, Finnish, Indonesian, Hungarian, Greek)				
Computer and video input / output					
INPUT A	Mini D-sub 15 pin (RGB / Y Pb Pr) Audio: Stereo mini jack				
INPUT B	Mini D-sub 15 pin (RGB) Audio: Stereo mini jack				
INPUT C	HDMI (Digital RGB/Y Pb Pr, Digital Audio) (HDCP support)				
VIDEO IN	Pin jack Audio: Pin jack (x2) (shared with S VIDEO IN)				
S VIDEO IN	Mini DIN 4-Pin Audio: Pin jack (x2) (shared with VIDEO IN)				
Monitor OUT	Mini D-sub 15-pin (from INPUT A and INPUT B) *3				
Audio OUT	Stereo mini jack (variable out) *4				
Control signal input / output, Others					
RS-232C	D-sub 9-Pin				
LAN	RJ-45 10BASE-T / 100BASE-TX				
USB	Type-A, Type-B				
Microphone input	Mini jack				
Speaker	Speaker 16 W (mono)				
Operating temperature (Operating humidity)	0°C to 40°C / 32°F to 104°F (20% to 80%; no condensation)				
Storage temperature (Storage humidity)	-10°C to +60°C / -14°F to +140°F (20% to 80%)				
Power requirements	AC 100V to 240V, 3.2 A to 1.4 A, 50 Hz / 60 Hz	AC 100V to 240V, 3.4 A to 1.6 A, 50 Hz / 60 Hz	AC 100V to 240V, 3.3 A to 1.4 A, 50 Hz / 60 Hz	AC 100V to 240V, 3.4 A to 1.6 A, 50 Hz / 60 Hz	AC 100V to 240V, 3.2 A to 1.4 A, 50 Hz / 60 Hz
Power consumption (Hi / Std / Low) AC 100 V - 120 V	318 W / 260 W / 230 W	340 W / 278 W / 248 W	323 W / 260 W / 230 W	340 W / 278 W / 248 W	318 W / 260 W / 230 W
Power consumption (Hi / Std / Low) AC 220 V - 240 V	305 W / 251 W / 222 W	329 W / 269 W / 240 W	311 W / 251 W / 222 W	329 W / 269 W / 240 W	306 W / 250 W / 222 W
Standby mode power consumption (Std / Low) AC 100 V - 120 V	5.1 W / 0.5 W	5.1 W / 0.5 W	5.1 W / 0.5 W	5.1 W / 0.5 W	5.1 W / 0.5 W
Standby mode power consumption (Std / Low) AC 220 V - 240 V	5.4 W / 0.5 W	5.4 W / 0.5 W	5.4 W / 0.5 W	5.4 W / 0.5 W	5.4 W / 0.5 W
Heat dissipation AC 100 V to 120 V	1085	1160	1102	1160	1085
Heat dissipation AC 220 V to 240 V	1041	1122	1061	1122	1044
Outside dimensions (W x H x D)	Approx: 372 x 138 x 382mm (14 21/32 x 5 7/16 x 15 1/32 inches) (without protrusions)				
Mass	6.0kg (13 lb, 4oz)				
Supplied accessories	PSS-640 Wall Mount, RM-PJ8 Remote Commander (1), Lithium battery: CR2025 (1), AC Power Cord (1), Operating Instructions (CD-ROM) (1), Quick Reference Manual (1), Mini D-sub 15-pin cable (1), Projector Station for Network Presentation application (CD-ROM) (1)	PSS-640 Wall Mount, RM-PJ8 Remote Commander (1), Lithium battery: CR2025 (1), AC Power Cord (1), Operating Instructions (CD-ROM) (1), Quick Reference Manual (1), Mini D-sub 15-pin cable (1), Projector Station for Network Presentation application (CD-ROM) (1), Interactive pens (IFU-PN250M, IFU-PN250S) USB Cable (5m)	PSS-640 Wall Mount, RM-PJ8 Remote Commander (1), Lithium battery: CR2025 (1), AC Power Cord (1), Operating Instructions (CD-ROM) (1), Quick Reference Manual (1), Mini D-sub 15-pin cable (1), Projector Station for Network Presentation application (CD-ROM) (1)	PSS-640 Wall Mount, RM-PJ8 Remote Commander (1), Lithium battery: CR2025 (1), AC Power Cord (1), Operating Instructions (CD-ROM) (1), Quick Reference Manual (1), Mini D-sub 15-pin cable (1), Projector Station for Network Presentation application (CD-ROM) (1), Interactive pens (IFU-PN250M, IFU-PN250S) USB Cable (5m)	PSS-640 Wall Mount, RM-PJ8 Remote Commander (1), Lithium battery: CR2025 (1), AC Power Cord (1), Operating Instructions (CD-ROM) (1), Quick Reference Manual (1), Mini D-sub 15-pin cable (1), Projector Station for Network Presentation application (CD-ROM) (1)
Optional wireless module (WLAN)	IFU-WLM3				
Interactive Pens	IFU-PN250M, IFU-PN250S				
Replacement lamp	LMP-E220				

\*1 This value is average.  
\*2 The figures are the expected maintenance time and not guaranteed. They will depend on the environment or how the projector is used.  
\*3 Not available in standby.  
\*4 Works as an audio switcher function. Output from a selected channel; not available in standby.

For full features visit:  
[www.pro.sony.eu/projectors](http://www.pro.sony.eu/projectors)

© 2014 Sony Corporation. All rights reserved. Reproduction in whole or in part without permission is prohibited. Features and specifications are subject to change without notice. All non-metric weights and measurements are approximate. 'Sony' and 'BrightEra' are registered trademarks or trademarks of Sony Corporation. All other trademarks are the property of their respective owners.

Distributed by

Sony is the leading supplier of AV/IT solutions to businesses across a wide variety of sectors including, **Media and Broadcast, Video Security, Medical, Digital Cinema and Displays.** It delivers products, systems and applications to enable the creation, manipulation and distribution of digital audio-visual content that add value to businesses and their customers. With over 25 years' experience in delivering innovative market-leading products, Sony is ideally placed to deliver exceptional quality and value to its customers. Collaborating with a network of established technology partners, Sony delivers end-to-end solutions that address the customer's needs, integrating software and systems to achieve each organisation's individual business goals. For more information please visit [www.pro.sony.eu](http://www.pro.sony.eu)

Follow us on Twitter at [@SonyProEurope](https://twitter.com/SonyProEurope) / [www.twitter.com/sonyproeurope](http://www.twitter.com/sonyproeurope)

HCT\_VPL S Series\_UltraShortThrow\_Datasheet\_J2756\_UK\_24/04/14\_V1



S-SERIES ULTRA SHORT THROW PROJECTORS

# S-Series ultra short throw projectors

Projectors for education and corporate environments



Key Features

**3LCD Colour Light Output colour reproduction, high brightness and high contrast ratio**

2600~3200 lumen brightness with native WXGA (1280 x 800) 16:10 widescreen screen resolution or for the VPL-SX630, XGA (1024 x 768) 4:3 screen resolution. These projectors have a contrast ratio of approximately 3000:1 full white/full black.

**Long-lasting lamp**

8000 hours in Low mode.

**Wireless presentation with tablet application**

The wireless presentation capability makes it easy to present files from your tablet device or smart phone.

**Interactive Presentation Utility application**

Supplied with dual pen auto calibration interactivity and IPU2 software. (VPL-SW620C/ VPL-SW630C only)

**Installation friendly**

Using lens shift function, the position of the projected image can be moved vertically by -3.7% to +3.7% and horizontally by -2.3% to +2.3% and x 1.03 optical zoom for easy adjustment.

**The S-Series ultra short throw projectors integrate seamlessly with school or office networks**

Affordable ultra short throw projectors with 2600~3200 lumens brightness and optional wireless capabilities for education and corporate environments.

Thanks to 3LCD BrightEra™ panel technology by Sony, users can enjoy extremely bright, high contrast, XGA/ WXGA images with excellent colour stability. The S Series Ultra Short Throw projectors powerful 2600~3200 lumens colour light output ensures that presentations are always seen clearly, even when ambient light levels are high. Easy to install with plenty of interfaces for connection with other devices, the VPL S-Series integrates seamlessly with school or office networks.

Adding an optional Wi-Fi module lets users wirelessly share homework, images and graphics from devices like PCs, smartphones and OSi / Android tablets. In addition, extended lamp replacement time up to 8,000 hours allows for synchronised filter and lamp maintenance, reducing the product's downtime and minimising costs.

## Features

**Very bright, clear images with maximum 2600~3200 colour light output**

The S-Series high light output ensures that presentations are seen clearly in any classroom or meeting room. There's a choice of three brightness modes to suit any environment

**High contrast ratio**

The projector has a high contrast ratio of approximately 3000:1 full white/full black. This is the contrast ratio between the maximum white luminance and the minimum black luminance for the projection system.

**Ultra Short throw ratio**

The projector has a throw ratio of 0.27:1 (0.267-0.274:1) allowing the projector to be installed close to the screen.

**XGA/WXGA resolution for detail-packed presentations**

XGA (1024 x 768) / WXGA (1280 x 800) resolution gives lots of crisp, fine detail: perfect for making presentations direct from a laptop or PC.

**3LCD BrightEra™ technology**

The projector's efficient 3LCD panel system is enhanced by advanced BrightEra™ technology by Sony. You'll see the difference with impressively bright, high resolution images and increased panel reliability.

**Up to 8000 hours long-lasting lamp for reduced maintenance and down time**

Teach for longer without interruption, with reduced maintenance that contributes directly to lower lifetime ownership costs. Filter cleaning cycles are synchronised with lamp replacement, cutting scheduled maintenance visits even further.

**Advanced energy-saving features**

Advanced lamp technology enables robust energy-saving features. For example, greater brightness control in Auto Light Dimming mode saves considerable energy when the projector is left on without being used. During projection, Auto Picture Mode automatically adjusts light output to suit the projected image. When you need to mute the picture temporarily, light output can be completely deactivated to minimise energy consumption.

**Network presentation (LAN/Wireless LAN)**

When the projector is installed on a LAN/Wireless LAN, presentations can be projected from any PC and Mac on the network. A tablet or smart phone can be connected at the same time. The wireless presentation capability makes it easy to present files from your tablet device or smart phone. You can project jpg, pdf and other supporting formats. Up to four users can project PC/Mac images simultaneously, while up to eight users can connect to one projector. For Windows/Mac, an application "Projector Station for Network Presentation" is provided. For tablet/smartphone, an application is provided by Pixelworks, downloaded from the web. For details, please visit the following website: <http://PWPresenter.pixelworks.com>

**Remote control for iOS device**

Projector Remote is simple remote control app for Sony's projectors. Networked projectors can be controlled by this remote app. Remote Control allows you to operate the projector with simple and easy-to-read buttons.

**Networked control**

Projector functions and status can also be managed and monitored remotely from any user's PC on the network. For Windows, an application "Projector Station for Network Control" is provided.

**USB Media viewer**

Insert a USB drive to effortlessly display photos, images and graphics with no PC needed.

**USB display**

The projector allows you to display pictures and audio<sup>1</sup> with one USB cable. You do not need to install any driver for this function. It is a convenient way to connect to the projector when you want to connect easily.

**Interactive Presentation Utility application**

Supplied with dual pen auto calibration interactivity and IPU2 software. (VPL-SW620C / VPL-SW630C only)

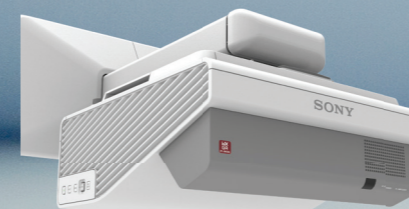
**Clear, rich audio from built-in speaker**

There's no need to add an extra audio system: enjoy rich, room-filling sound from the powerful 16W speaker.

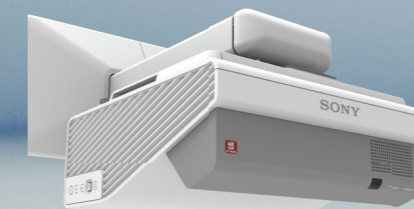
**Easy to install**

Adjustable optical zoom and lens shift simplify speedy, fuss-free installation in any classroom. Generous connections simplify hook-ups with PCs, DVD players, microphones and other AV devices.

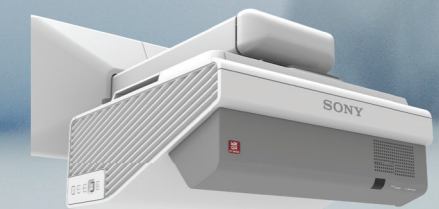
The S-Series ultra short throw projectors integrate seamlessly with school or office networks



VPL-SW620/VPL-SW620C  
WXGA with 2600 lumens brightness



VPL-SW630/VPL-SW630C  
WXGA with 3100 lumens brightness



VPL-SX630  
XGA with 3200 lumens brightness

<sup>1</sup> There is a time lag in video and audio. When not in simple use, it is recommended to use Line-in or HDMI-in.